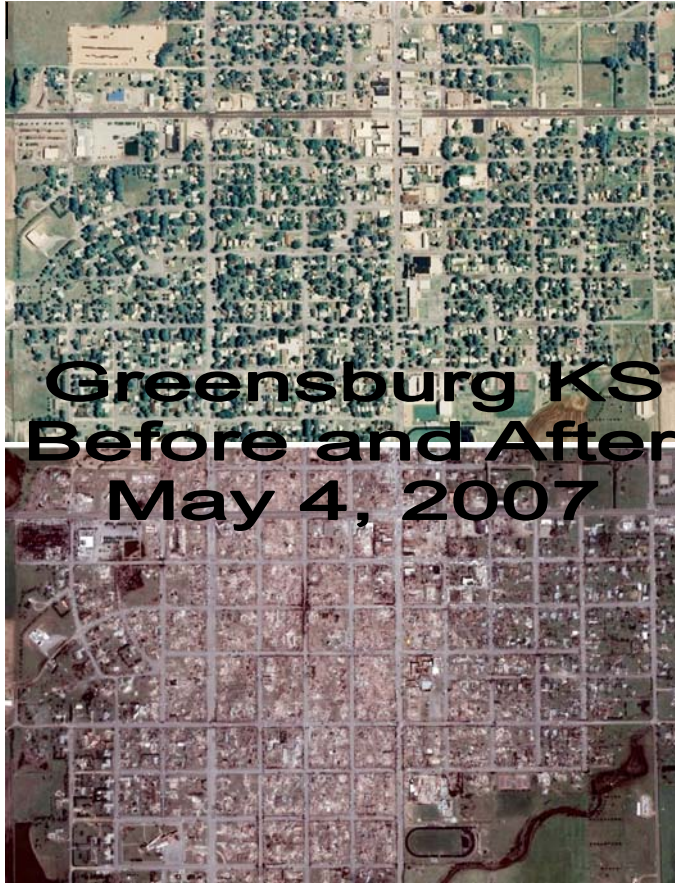


# Geographic Information Systems (GIS)



**We are coming to help,  
we just need to know  
where to go!**

In a Tornado, or other emergency, response time is imperative. First responders from all over Kansas, through mutual aid and other means, will arrive to aid your jurisdiction when tragedy strikes.

**What do responders need?**

**They need you to help them help you.**

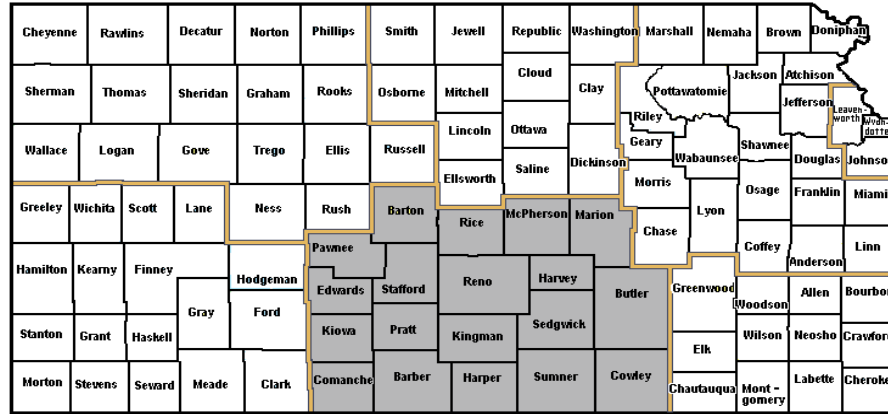
They need to be able to find critical pre-disaster sites within your jurisdiction, often without the aid of familiar local landmarks like street signs and buildings, in order to save lives and protect the property of YOUR citizens.

## **How can GIS help in disasters?**

Geographic Information Systems (GIS), in conjunction with an appropriate back-up strategy, play a valuable role in emergency preparedness, response, recovery and restoration of communities who are impacted by natural or manmade disasters. This role includes:

- Helping communities prepare for disasters by mapping essential locations, including shelters, health care facilities, hazardous material sites, utilities, the list is endless!
- Helping Law Enforcement, Fire and EMS personnel respond to incidents with pre-disaster developed maps and the ability to use global positioning system (GPS) equipment to locate critical sites when street signs and landmarks have been destroyed.
- Helping Emergency Management, local government and outside agencies to quickly assess the impact of the disaster and begin effective recovery operations.
- Helping local government and its citizens to restore communities to pre-disaster levels.

# Geographic Information Systems (GIS)



## The Kansas South Central Region Homeland Security Council GIS Project

The Region's Homeland Security Council GIS project pulled together a coalition of first responders and GIS professionals from all nineteen counties with the common task of enhancing preexisting county GIS systems and to provide guidance on future regional GIS projects. The project is managed by the Kansas Adjutant General's Department, Geospatial Technologies Section, with the direct support of The Kansas Collaborative, the Data Access and Support Center, U.S. Geological Survey, the Kansas GIS Director and members of the local GIS and first responder communities.

The GIS project developed a prioritized list of critical data layers required by first responders for emergency response, adopted standards for pre-developed maps and formats for the storage of essential emergency resource asset data within a regional GIS system. The project also provides a means for U.S. Department of Homeland Security grant funds to be utilized at the local level to enhance GIS capabilities.

The GIS project provided the following to local jurisdictions:

- Introductory Level GIS training to GIS and first responder personnel
- Global Positioning System (GPS) training
- GIS Hardware and Software, including mapping-grade GPS units

Additionally, the project allows GIS professionals from individual counties and cities within the region to come together and focus on a single common goal: *improved cooperation, communication and networking to make Kansas responders and citizens safer and better prepared.*

The South Central Region Homeland Security Council GIS project has served as the prototype for the deployment of future regional homeland security GIS projects in Kansas. Four additional regions have recently approved projects - the Northwest, Southwest, North Central and Southeast.

For further information please contact: Jessica Frye, Kansas Adjutant General's Department at [jessica.frye@tag.ks.gov](mailto:jessica.frye@tag.ks.gov) or (785) 274-1610.